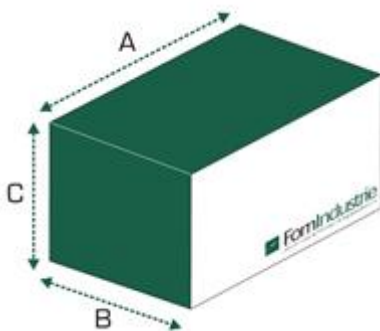


BLITZ ALVA 550

Double head sawing machine with \varnothing 550 mm tungsten carbide blade with motorized movement of the mobile head and electropneumatic control of the head tilting



CE



Taglio Utile	A (mm)	B (mm)	C (mm)	Kg
m. 4	5700	2000	2010	1600
m. 5	6700	2000	2010	1900
m. 6.6	8300	2000	2010	2400

* Ingombro rulliers testa mobile A + 3000 (alla max lunghezza di taglio)

Power supply	Total power installed	Air consumption for work cycle	Working pressure
3F - 400 V AC - 50 Hz	5,4 kW	40 NL/cycle	7 bar



Technical specifications:

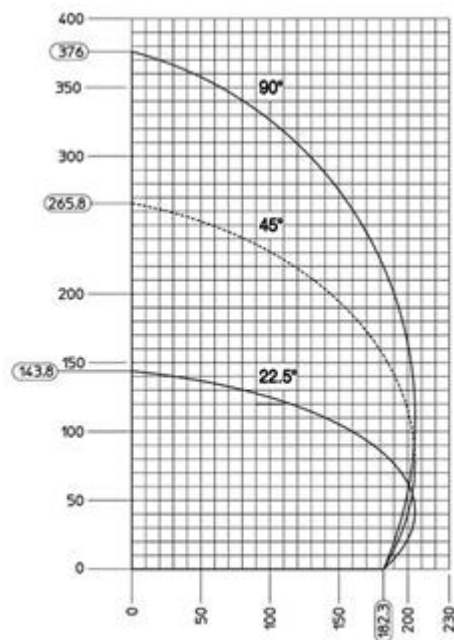
- Head tilting from 22.5° external to 90° by pneumatic cylinders, with mechanical stops for intermediate angles
- No. 2 tungsten carbide saw blades \varnothing 550 mm, hole \varnothing 32 mm
- Oleo-pneumatic advance of the blade (adjustable blade exit speed – quick return)
- 90°- 45°- 22.5° and intermediate angles obtained with stops located at the front of the machine and protection from chips
- Cutting area guard kit
- No. 3 pneumatic horizontal vices
- No. 2 pneumatic vertical vices
- Customised devices to clamp special profiles (on request)
- Movable head roller table 2,5 m
- Direct motor to blade transmission
- First head fixed, second head mobile with automatic positioning. Positioning is taken care of by a Brushless motor with decimal precision
- Maximum cutting capacity between the two heads: 4 - 5 - 6,6 m depending on the version supplied (can be increased with specific software)
- Separate electrical and pneumatic cabinets, both placed for easy inspections
- Set up for the extraction of chips and fumes
- Working pressure: 7 bar
- Real time control of functions by NC
- Membrane-type control keyboard protected from dust and chips
- Large size swarf collection box to allow easy collection
- Set up to take conveyor belt for collecting offcuts and a motorized chips collection conveyor belt
- Chips discharging in the collection box or swarf belt (optional)
- Blade motors, three-phase 3HP (2.2 kW) – 2800 rpm Euro voltage 230/400V– 50Hz; 275/480V – 60 Hz
- No. 2 flashing lights (on the heads and on the roller tables, one of which is buzzer) which warn when the machine is in operation

Standard accessories:

- No. 2 tungsten carbide saw blades \varnothing 550 mm
- Mouse and keyboard (only E version)
- Touch screen control panel
- Cutting area guard kit
- Movable head roller table 2,5 m
- No. 3 horizontal vices
- Spray mist blade lubrication system
- Set up for the extraction of chips and fumes
- FSTCUT4 software licence (only E version)

CUTTING DIAGRAM

See attachments



Control unit TEX COMPUTER

ALIA (A)



Electronic equipment description:

- Industrial numerical control built into cabinet with remote display and keyboard on the command console by means of LVDS system
- Touch monitor 15" LED backlighting
- Touch screen monitor
- Cutting list received via Ethernet (RJ 45) (on request)
- USB port for transferring cutting lists from management software (1 USB key included)
- Software, to be installed on the PC (not included), for managing and converting cutting lists, DXF images and data transfer via a network

Software description:

- FOM Multitasking Operating System with user graphic interface with window menu and icons
- Cutting lists imported from office by means of USB key or network connection (the latter optional only with Ethernet port network connection)
- Profile archive with association to the various machining parameters and to profile shaped sections
- Software licence for highlighting profile sections in DXF format (on request)
- Semiautomatic cutting function with automatic profile height compensation and piece counter with cutting disabling
- Formulae & Type software for up to 6 variables where each element is assigned a description of the machining operations to be performed
- Software for entering cutting lists manually from keyboard

SILVER (C)



Electronic equipment description:

- Industrial numerical control built into cabinet with Touch screen display on the control panel
- Touch monitor 15" LED backlighting
- Touch screen monitor
- Ethernet port network connection to on-board PC or external devices
- USB port for transferring cutting lists from management software (1 USB key included)
- Software, to be installed on the PC (not included), for managing and converting cutting lists, DXF images and data transfer via a network

Software description:

- FOM Multitasking Operating System with user graphic interface with window menu and icons
- Cutting lists imported from office by means of USB key or network connection (the latter optional only with Ethernet port network connection)
- Profile archive with association to the various machining parameters and to profile shaped sections
- Possibility of importing real DXF type profile sections using the converter
- Semiautomatic cutting function with automatic profile height compensation and piece counter with cutting disabling
- Display of profile sections while executing cutting lists with indications of piece positioning on the machine
- Formulae & Type software for up to 6 variables where each element is assigned a description of the machining operations to be performed
- Software for entering cutting lists manually from keyboard

GRAPHICS (E)



Electronic equipment description:

- Personal computer
- Touch screen monitor 15"
- New generation industrial type numerical control (automotive type)
- Sliding control panel onboard machine
- Standard mouse and keyboard housed in a retractable compartment
- USB port IP65 on front panel
- 128 GB SSD
- Windows 10 operative system
- Processor Intel
- 3-year international "on site" warranty for PC
- FSTCUT4 software
- Direct connection to FOM technical support via the remote assistance service

Description of functions and characteristic FSTCUT4 program:

FSTCUT4 is the new and advanced management program for double-head sawing machines. In fact, it manages all the operations that can be carried out on these machines. It allows a cut to be made in managed mode and can receive a cutting list directly from the office, while it uses the Industria 4.0 environment to transmit the production data back to the office itself. It reduces the use of materials to a minimum by optimising the cut.

- Semiautomatic cutting function with automatic profile height compensation and piece counter with cutting disabling
- Direct import of the profile section from file in DXF/DWG ® format
- Classified profile archive graphic management by brand and series with working parameters associated to each profile and image display
- Management of list filing folders with paths that can also be configured online
- Cutting lists imported via network or USB memory stick
- Coating thickness and extrusion tolerance automatic corrector function
- Displaying 3D of profile
- Import of cutting lists in FOM format (protocol P2K2)
- Managing of users
- Display of profile sections while executing cutting lists with indications of piece positioning on the machine
- Display and print of frame image with the part being machined highlighted (only with cutting lists from the design software ProF2)
- Direct connection to FOM technical support via the remote assistance service
- 3D cutting simulation
- Automatic import of cutting list from network folder
- Industry 4.0 ready
- Integration with LOLA

On request:

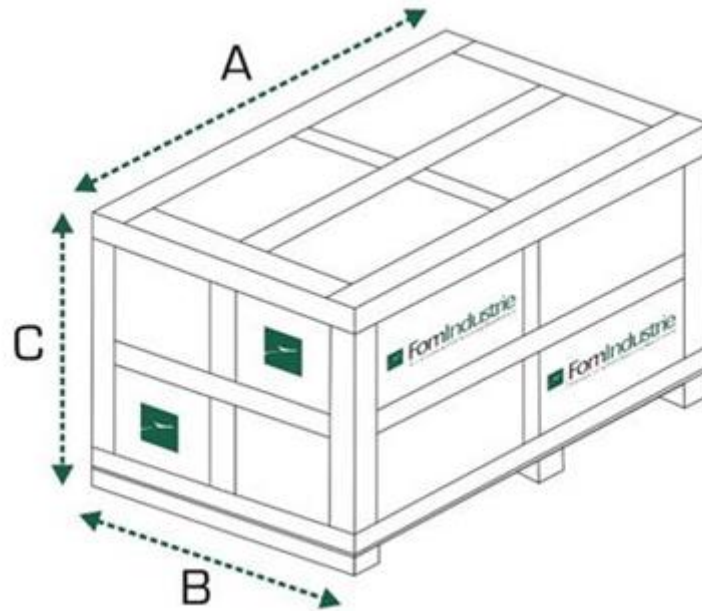
- Formulas and Types module, to create parametric articles and generate the resulting cutting lists
- Wireless optical barcode reader and relative management software for work lists
- Printout of the profile section with the option to personalise the label layout
- Label printer
- User licence for step-by-step cutting (no optimisation necessary for fixed distance parallel cuts)
- Cutting lists optimization module
- Software user licence for special length cutting (extra-large and super-minimum) and bevel cuttings at variable angles.
- Management of cutting statistics and blade wear (FST STATISTICS C4)
- Licence for FSTCUT4 program for office
- Data conversion driver. For supported formats, see list in attachment.

Optionals:

- Additional charge for special three-phase voltage and cycles
- Additional charge for special power supply with transformer
- Additional charge for electrical version UL-CSA
- Additional charge for electric cabinet cooling
- Additional charge for EAC (Eurasian Conformity) certification
- Additional horizontal vice kit
- PORTER Infeed roller table + vertical rollers 3 m
- PORTER Infeed roller table + vertical rollers 4,2 m
- Retractable intermediate profile support (no.1)
- Retractable external profile support for machine with 4 - 5 m working cut (floor fixing outside machine)
- Third retractable profile support for machines with 6.6 m cutting length
- Manual kit for under size cuts
- Electronic profile height measuring device
- Minimum quantity lubrication (MQL) with pure oil
- Profile raising roller kit
- Adjustable buffer kit for vertical vice on both heads
- Adjustable double buffer kit for vertical vice, it's compulsory on both heads
- Software user licence for special length cutting (extra-large and super-minimum) and bevel cuttings at variable angles.
 - Software licence for program for step-by-step cutting, with photocell safety barrier. Note: it is compulsory to buy the additional horizontal vice (not available for A version, on request for C and E versions)
 - Step-by-step cutting software licence for all cuts carried out at the same angle (parallel cuts) with two-handed control For version not CZ
 - Kit for list transmission via Ethernet for online connection to external devices and online assistance (on request for A version, supplied for C and E versions)
 - Software licence for program for viewing cross-sections in DXF format (on request for A version, supplied for C and E versions)
- Licence for FST STATISTICS C4 program
- Teleservice contract for single machine (not available for A and C versions, supplied for E versions)
- Label printer (including 1 reel of labels)
- Paper roll for printer; min. n. 10 pcs (58x35 mm)
- Paper roll for printer; min. n. 10 pcs (100x36 mm)
- Chips conveyor belt - 4 m
- Swarf conveyor belt - 5 m
- Chips conveyor belt - 6 m
- Centre machine chip conveyor
- Inclined external conveyor belt

Optional: Packing

- Crate packing – 4 m
- Crate packing - 5 m
- Crate packing - 6,6 m



Working Cut	A (mm)	B (mm)	C (mm)	Kg
4 m	6500	1700	1800	1820
5 m	7530	1700	1800	2150
6.6 m	9090	1700	1800	2700