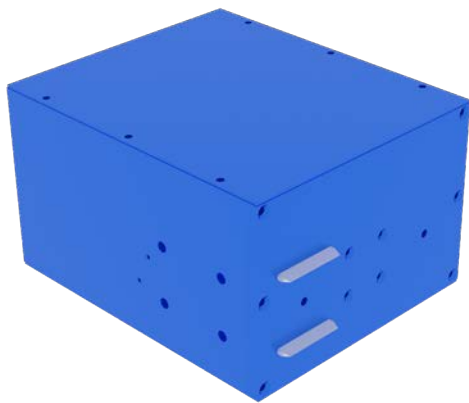
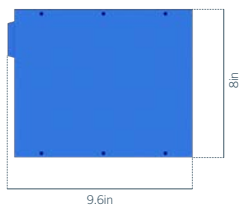


# Mitre Pin Box



Top view



Side view



## SPECIFICATIONS

Overall width	204mm
Overall height	144mm
Overall length	244mm
Pin adjustment (total extension)	40.8mm
Weight	15kg
Servo motor	1 phase
Air supply	6-8 Bar (600-800kPa)
Power requirement	10amp, 115V, 1 phase

\*Specifications and design subject to change, please confirm details when ordering

## USED FOR

The Mitre Pin Box is designed to manipulate components prior to cutting to achieve required mitre angles.

## FEATURES

- Compact box to fit onto any table configuration required
- Automated pushers set component at pre-programmed mitre angle
- Adjustable pusher pins allow for various mitre angles to be achieved

## OPTIONS

- Available in left or right hand configurations
- Can be paired with a variety of tables/saws as required